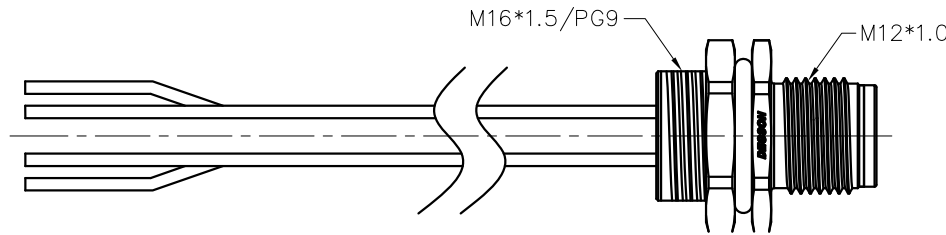
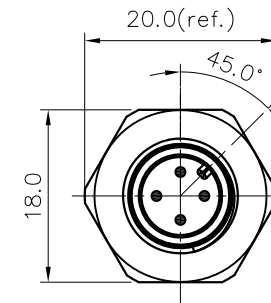
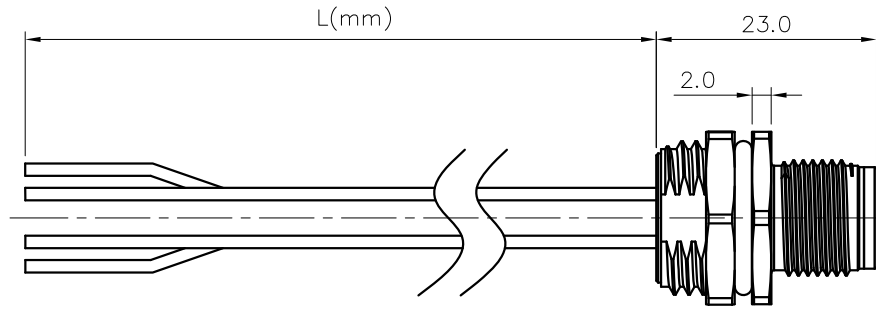


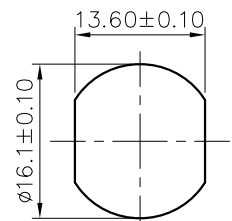
REVISION RECORD

REV	ECN	DESCRIPTION	DRFT	DATE



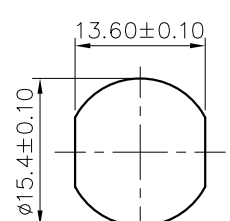
SD-M12X-XXP-MM-SH8XXX-00A(H)
 Coding: A,B,D
 Pin number: 03,04,05, 06,08,10,12,17
 Thread specification:
 A: PG9;
 B: M16*1.5
 XX: 150~1500mm
 15: 150±15mm
 30: 300±20mm
 50: 500±20mm
 A0: 1000±40mm
 A5: 1500±40mm
 Wire Length L: 150~1500mm

Thread specification:
M16*1.5



Panel Mounted

Thread specification:
PG9



Panel Mounted

DETACHED LISTS	PART NO.: SDM12XXXPMMSH8XXX00AH	宁波高松电子有限公司 NINGBO DEGSON ELECTRICAL CO., LTD		
	APPD:	NAME: SD-M12X-XXP-MM-SH8XXX-00A(H)		
	CHKD:	DRFT: LRS 2020.09.10	TITLE: CUSTOMER DRAWING	REV: D0-2
	THIRD ANGLE PROJECTION	DRAWING NO.: XXXXXXX-XX-CXX	SHEET: 1/2	SCALE: 1:1
		MM (INCH)	DO NOT SCALE DRAWING	SCALE: 1:1

REVISION RECORD

REV	ECN	DESCRIPTION	DRFT	DATE
-----	-----	-------------	------	------

H

G

F

E

D

C

B

A

H

G

F

E

D

C

B

A

17pin A Coding		12pin A Coding		10pin A Coding		5pin B Coding		4pin D Coding											
Pin Assignments Front View		Pin Assignments Front View		Pin Assignments Front View		Pin Assignments Front View		Pin Assignments Front View											
17	White/Grey	/		/		/		/											
16	Yellow/Brown																		
15	White/Yellow																		
14	Brown/Green																		
13	White/Green																		
12	Red/Blue									12	Red/Blue								
11	Grey/Pink									11	Grey/Pink								
10	Violet									10	Violet								
9	Red									9	Red								
8	Grey									8	Grey								
7	Black	7	Black																
6	Yellow	6	Yellow																
5	Pink	5	Pink	5	Pink	5	Grey	/											
4	Green	4	Green	4	Green	4	Black												
3	White	3	White	3	White	3	Blue			4	Black								
2	Blue	2	Blue	2	Blue	2	White			3	Blue								
1	Brown	1	Brown	1	Brown	1	Brown			2	White								
Pin	Wire Color	Pin	Wire Color	Pin	Wire Color	Pin	Wire Color			1	Brown								
Pin Out		Pin Out		Pin Out		Pin Out				Pin Out									
3pin A Coding		4pin A Coding		5pin A Coding		6pin A Coding				8pin A Coding									
Pin Assignments Front View		Pin Assignments Front View		Pin Assignments Front View		Pin Assignments Front View				Pin Assignments Front View									
/		/		/		/		8	Red	/									
								7	Blue										
								6	Pink										
								5	Grey										
								4	Black			4	Black	4	Yellow				
								3	Blue			3	Blue	3	Green				
								2	White			2	White	2	Brown				
								1	Brown			1	Brown	1	White				
								Pin	Wire Color			Pin	Wire Color	Pin	Wire Color	Pin	Wire Color	Pin	Wire Color
								Pin Out				Pin Out		Pin Out		Pin Out		Pin Out	

NOTES:

- Rated voltage/current : 3pin A: 250V / 4A
4pin A: 250V / 4A
5pin A: 60V / 4A
6pin A: 30V / 2A
8pin A: 30V / 2A
10pin A: 30V / 1.5A
12pin A: 30V / 1.5A
17pin A: 30V / 1.5A
5pin B: 60V / 4A
4pin D: 250V / 4A
- Withstanding voltage : 3,4pin A: AC1500V/1Min
5pin A: AC1120V/1Min
6,8pin A: AC500V/1Min
10,12,17pin A: AC500V/1Min
5pin B: AC1120V/1Min
4pin D: AC1500V/1Min
- Levels of protection: IP68
- Wire specifications :
3pin A: 22AWG/0.34mm²,UL1061
4pin A: 22AWG/0.34mm²,UL1061
5pin A: 22AWG/0.34mm²,UL1061
6pin A: 24AWG/0.25mm²,UL1061
8pin A: 24AWG/0.25mm²,UL1061
10pin A: 26AWG/0.14mm²,UL1061
12pin A: 26AWG/0.14mm²,UL1061
17pin A: 26AWG/0.14mm²,UL1061
5pin B: 22AWG/0.34mm²,UL1061
4pin D: 22AWG/0.34mm²,UL1061
- Wire connection mode: soldering
- Operating temperature: -25°C~+80°C
- For Panel Thickness Max: 4.5mm
- RoHS Compliance
- Tolerance : ±0.5mm

DETACHED LISTS	PART NO.: SDM12XXXPMMSH8XXX00AH	宁波高松电子有限公司 NINGBO DEGSON ELECTRICAL CO., LTD		
	APPD:	NAME: SD-M12X-XXP-MM-SH8XXX-00A(H)		
	CHKD:	TITLE: CUSTOMER DRAWING		
	DRFT: LRS 2020.09.10	REV: D0-2	SHEET: 2/2	
			DRAWING NO.: XXXXXXXX-XX-CXX	SCALE: 1:1